

Richard Harding

February 2017

Temporalities

for ensemble

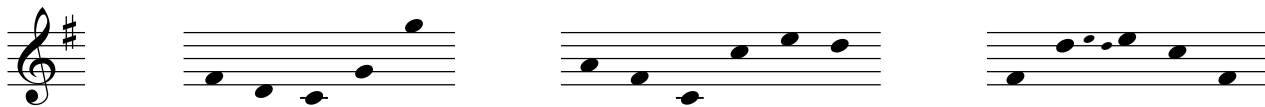
Temporalities

Richard Harding
Feb. 2017

I. Biological Time



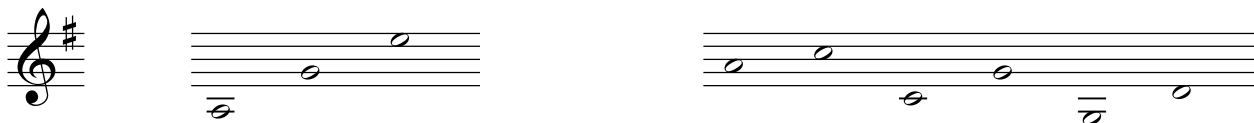
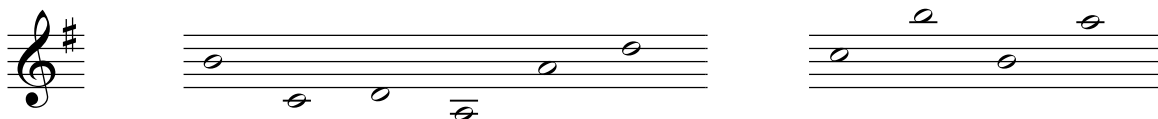
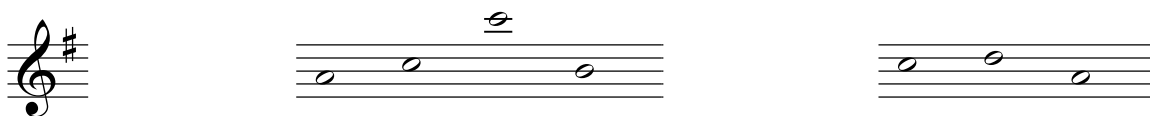
This quaver figure is repeated throughout part one, and forms a pulse against which the improvised rhythmic values given to the following figures are measured. The figures may be played, combined and repeated in any order and any octave.



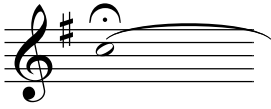
II. Geological Time



The pitch classes of this chord are to be played as sustained drones, against which the following figures are to be played. The note values chosen are to be relatively long in duration. The figures may be played, combined and repeated in any order and any octave.



III. Spacetime



A sustained C underpins this section. Against this, each player moves through the following line, in a series of long sustained tones, at their own chosen pace. Play from the start to the end of the line in order. At one point, of your own choosing, jump back to some random point in the line and continue playing to the end. The piece ends when all players have reached the end of the line.

